



DECORATIVE DOOR PANELS

We are celebrating our 25th ANNIVERSARY! On this very special occasion, inspired by birthday mood, we have prepared two exclusive offers for you:

- Exclusive color PREMIUM PLUS PVC windows for STANDARD color price
- Bicolor ALU high-energy efficiency windows SCAND / MasterLine8 / PE78N for the price of one-color.

In addition, the 25th anniversary offer includes an EXTRA GIFT from the promotion catalogue:

- Decorative VEYNA PVC door panel. Applies for orders 20m² and more of PVC windows and/or doors;
- Decorative VEYNA ALU door panel. Applies ordering ALU windows and/or doors:
 - Infill panel – for orders 20m² and more of constructions,
 - Single sided panel – for orders 30m² and more of constructions,
 - Double sided panel – for orders 40m² and more of constructions.



INFILL PANEL



SINGLE SIDED PANEL



DOUBLE SIDED PANEL

The value of a gift ranges from 390 EUR up to 1096 EUR. Which gift is yours?

The offer is valid:

- Only for buyers of colored PVC or ALU windows;
- To all our local and international clients;
- To commercial offers from **07/07/2020** to **7/08/2020**.

The offer is not valid for:

- White PVC or ALU windows and doors;
- Windows with double glazing or without glazing;
- Windows and/or doors of different sides are in different colors;
- Sliding or folding doors;
- Curtain walls;
- Other items on sale;
- The offer is not valid for business partners purchasing windows and / or doors on wholesale terms and / or special prices and / or conditions.

BASIC LINE is a group of door panels stamped in PVC (white) or in ABS (veneers). ABS is a very resistant material to impacts and highly reflecting UV rays. Both materials are of high quality and have a long aging period. Suitable for modern and classical constructions. What makes this product the most popular in its series are: competitive price, short realization. BASIC LINE products have five year warranty.

Parameters:

- **Standard size (up to):** 850mm x 2000mm x 44mm (for PVC doors, that width is up to 1168 mm and height is up to 2280 mm).
- **Heat transfer coefficient:** $U < 0,8 \text{ W/m}^2$.
- **The structure of door panels:** 1,5mm PVC / 41mm XPS / 1,5mm PVC.
- **Glazing:** triple glazing of any standard glass (see the options in page 16).
- **Glass spacers:**
 - thermal-insulating spacer Thermix TX.N (grey RAL7035 / black RAL 9005);
 - aluminium spacer (by request).
- **Colors:**
 - white (not laminated RAL9016);
 - 12 colored laminates from the SALAMANDER color palette (see below).

Colors



Golden Oak
(51)



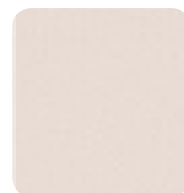
Machagoni
(26)



Nusbaum
(21)



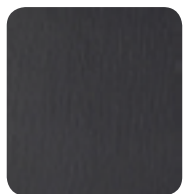
Mooreiche
(25)



Creme
(59)



Dunkelrot
(06)



Anthrazitgrau
(70)



Quarzgrau
(78)



Basaltgrau
(74)



Grau
(02)



Dunkelgrün
(03)



Moosgrün
(10)

FOR PVC DOORS

BL-01



BL-01(2)



BL-02(2)



BL-02(2)S



BL-02(8)



BL-02



BL-03(1)



BL-03



BL-04(1)



BL-04



BL-05



BL-07(1)



Note: the illustrations of the door panels are explanatory and depicted from the outside.

FOR PVC DOORS

BL-07(3)



BL-07



BL-11(1)



BL-11



BL-13



BL-14



BL-15



BL-15 (1)



BL-17



BL-20



BL-25(3)



BL-25(1)



Note: the illustrations of the door panels are explanatory and depicted from the outside.

FOR PVC DOORS

BL-25



BL-26



BL-27



BL-28



Note: the illustrations of the door panels are explanatory and depicted from the outside.

NEW LINE EK it is a separate subgroup of panels, which perfect for both PVC and ALU doors. In addition to white, but also colored laminated panels can be selected for PVC doors (except for NL-EK panels from 28 to 40, which are only available for ALU doors). Any color from RAL color palette can be selected for NEW LINE EK ALU doors. NEW LINE EK products have five year warranty.



Parameters:

• Standart dimensions (up to):

- PVC and ALU infill door panel: 900mm x 2000mm x 44mm;
- single sided ALU panel: 1250mm x 2500mm x 75mm;
- double sided ALU panel: 1250mm x 2500mm x 90mm.

• Heat transfer coefficient U:

- infill panel < 0.8 W/m²K;
- double sided panel < 0.5 W/m²K;

• The structure of panel:

- PVC infill panel: 2.0/40/2.0 - 2,0 mm PVC plate - 40,00 mm rigid polyurethane foam - 2,0 mm PVC plate;
- ALU infill panel: 1,5/41/1,5 - 1,5mm ALU sheet - 40mm rigid polyurethane foam - 1,5mm ALU sheet;
- ALU double sided panel: 3.0/6/XX/2.0 - 3,0mm ALU sheet - 6mm expansion joint + required thickness of rigid extruded polystyrene foam - 2,0mm ALU sheet.

• Glazing: triple glazing of any standard glass (see the options in page 17).

• Glass spacers:

- thermal-insulating spacer Thermix TX.N, (black RAL 9005/ grey RAL 7035);
- aluminium spacer (by request).

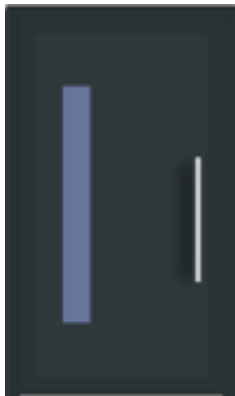
• Panel colors:

- PVC panel: any laminated color from SALAMANDER color palette (see page 11);
- ALU panel: any smooth color from RAL color palette.



FOR PVC DOORS

NL-EK 6



NL-EK 7



NL-EK



NL-EK 9



NL-EK 10



NL-EK 11



NL-EK 12



NL-EK 13



NL-EK 14



NL-EK 15



NL-EK 16



NL-EK 17



Note: the illustrations of the door panels are explanatory and depicted from the outside.

FOR PVC DOORS

NL-EK 18



NL-EK 19



NL-EK 20



NL-EK 21



NL-EK 22



NL-EK 23



NL-EK 24



NL-EK 25



NL-EK 26



NL-EK 27



NL-EK 28



NL-EK 41



Note: the illustrations of the door panels are explanatory and depicted from the outside.

FOR PVC DOORS

NL-EK 42



NL-EK 43



NL-EK 44



Note: the illustrations of the door panels are explanatory and depicted from the outside.

SALAMANDER COLOR PALETTE

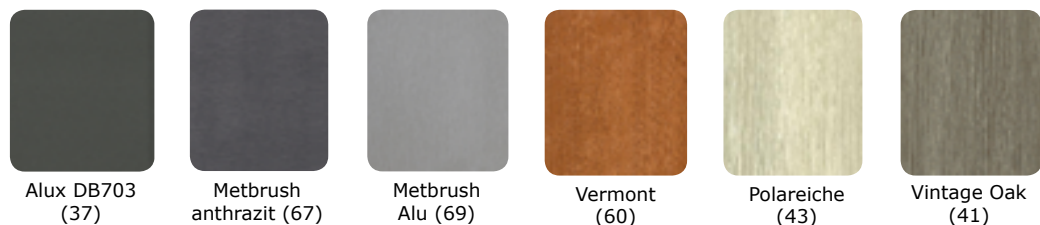
STANDARD colors



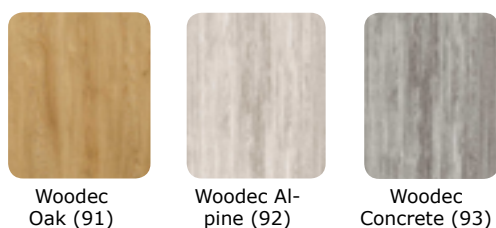
SPECIAL colors



PREMIUM colors

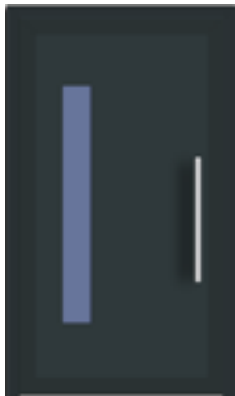


PREMIUM PLUS colors



FOR ALU DOORS

NL-EK 6



NL-EK 7



NL-EK 8



NL-EK 9



NL-EK 10



NL-EK 11



NL-EK 12



NL-EK 13



NL-EK 14



NL-EK 15



NL-EK 16



NL-EK 17



Note: the illustrations of the door panels are explanatory and depicted from the outside.

FOR ALU DOORS

NL-EK 19



NL-EK 21



NL-EK 22



NL-EK 23



NL-EK 24



NL-EK 25



NL-EK 28



NL-EK 29



NL-EK 30



NL-EK 31



NL-EK 32



NL-EK 33



Note: the illustrations of the door panels are explanatory and depicted from the outside.

FOR ALU DOORS

NL-EK 34



NL-EK 35



NL-EK 36



NL-EK 37



NL-EK 38



NL-EK 39



NL-EK 40



Note: the illustrations of the door panels are explanatory and depicted from the outside.

PRESTIGE LINE is for people who change with the time. Straight lines, an original design and fashionable decorative elements give a modern look tailored to your taste. This type of door panels are only for single sided or double sided ALU doors. Doors equipped with our overlay panels gain uniqueness. Entrance façades attract attention - they are elegant and timeless. Due to the extremely thick thickness and the interlayer of elastic material, PRESTIGE LINE is recommended for use in high doors when their operating conditions are particularly unfavorable (for example, in often sunlit facades, harsh conditions, etc.). PRESTIGE LINE products have five year warranty.

Parameters:

Standard dimensions (up to):

- single sided ALU panel: 1250mm x 2500mm x 75mm;
- double sided ALU panel: 1250mm x 2500mm x 90mm.
- **Heat transfer coefficient:** $U < 0.5 \text{ W/m}^2\text{K}$;
- **The structure of panel:** 3.0/6/XX/2.0 – 3,0mm ALU sheet- 6mm expansion joint + required thickness of rigid extruded polystyrene foam – 2,0mm ALU sheet.
- **Glazing** – standard with external safe (laminated 33.1) glass:
 - in single sided panel: triple glazing, $U_g < 0,7 \text{ W/m}^2\text{K}$;
 - in double sided panel: quadruple glazing, $U_g < 0.5 \text{ W/m}^2\text{K}$.

NOTE: in models PL-7, PL-10 and PL-11 the second glass of glass unit is partially matte with transparent stripes /edges.

• Glass spacers:

- thermal-insulating spacer Thermix TX.N, black RAL 9005;
- thermal-insulating spacer Thermix TX.N, grey RAL7035 (by request);
- aluminium spacer (by request).

• Decoration of panels:

- in external side;
- stainless steel applications INOX (in models PL-03, PL-24, PL33) aligned with the panel surface;
- milled grooves of 10 mm wide.

- **Colors:** any smooth color from RAL color palette.



FOR ALU DOORS

PL-03



PL-07



PL-10



PL-11



PL-16



PL-17



PL-18



PL-19



PL-24



PL-26



PL-33



Note: the illustrations of the door panels are explanatory and depicted from the outside.

TYPES OF STANDARD GLAZING

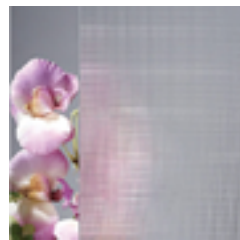
- **Transparent selective** 4mm
- **Safe laminated VSG 3.3.1** 6,4mm
- **Satinato matte** 4mm
- **Chinchila colorless** 4mm
- **Chinchila brown** 4mm
- **Mastercarre** 4mm
- **Masterpoint** 4mm
- **Reflective brown** 6mm
- **Delta colorless** 4mm (when the panel thickness is 36mm and more)
- **Delta brown** 4mm (when the panel thickness is 36mm and more)
- **Delta matte** 4mm (when the panel thickness is 36mm and more)
- **Crepi** 4mm (when the panel thickness is 36mm and more)
- **Flutes** 4mm (when the panel thickness is 36mm and more)



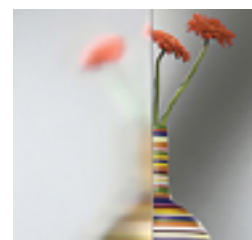
DELTA



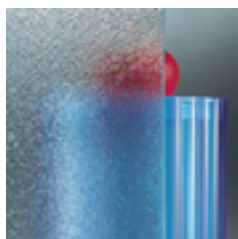
MASTER CARRE



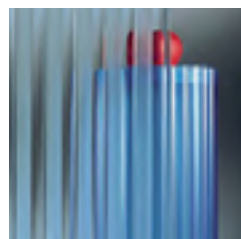
MASTER POINT



SATINATO



CREPI



FLUTES



CHINCHILLA